



Inside and Outside the Body

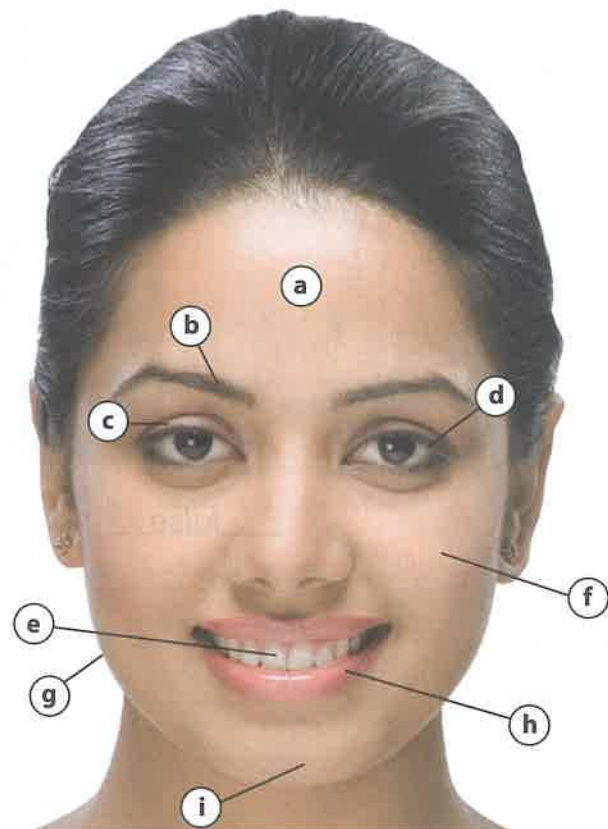
1. Look in your dictionary. Cross out the word that doesn't belong.

- a. The face forehead jaw chin ~~toe~~
- b. Inside the body liver intestines abdomen stomach
- c. The leg and foot knee heel ankle tongue
- d. The skeleton pelvis brain skull rib cage
- e. The hand thumb shin palm wrist
- f. The senses taste hear lip smell

2. Label the parts of the face. Use the words in the box.

eyebrow eyelashes eyelid cheek chin
~~forehead~~ jaw lip teeth

- a. forehead
- b. _____
- c. _____
- d. _____
- e. _____
- f. _____
- g. _____
- h. _____
- i. _____



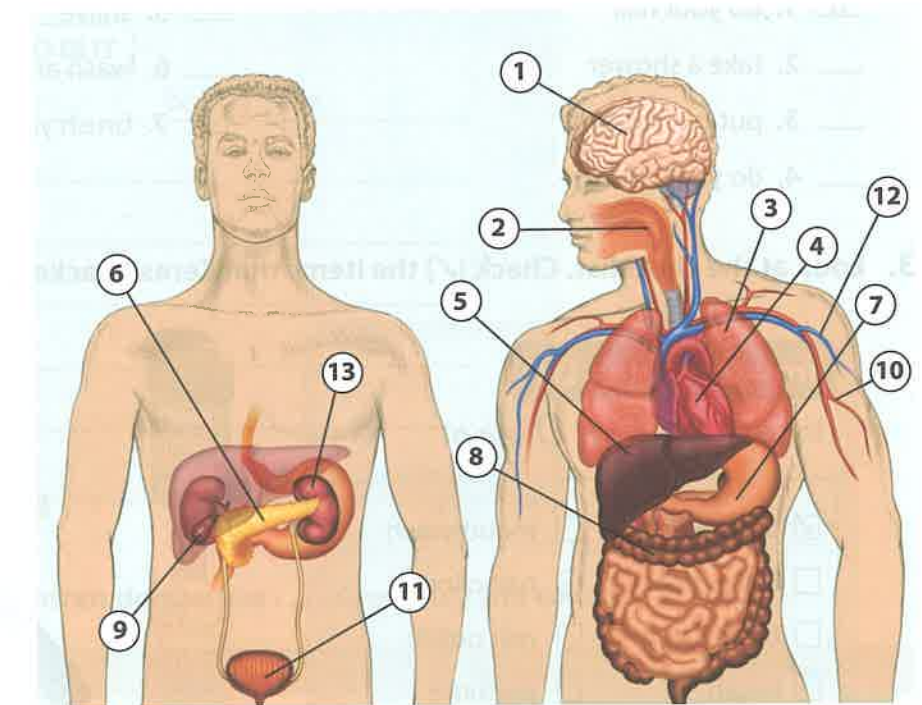
3. Look at the picture. Check (✓) the parts of the body that are NOT covered by clothes.

- arms
- buttocks
- calves
- hip
- elbows
- fingers
- feet
- forearms
- hands
- head
- knees
- legs
- lower back
- shins
- shoulder blades
- jaw



4. Match.

- 4 a. heart
- ___ b. kidney
- ___ c. lung
- ___ d. liver
- ___ e. gallbladder
- ___ f. bladder
- ___ g. throat
- ___ h. stomach
- ___ i. pancreas
- ___ j. brain
- ___ k. intestines
- ___ l. artery
- ___ m. vein



5. What about you? Underline the words for parts of the body that are NOT OK for men to show on the street in your native country. Circle the words for parts of the body that are NOT OK for women to show.

- arms abdomen elbows face mouth
 ankles chest knees calves feet

CHALLENGE Choose five parts of the body. What are their functions?
 Example: *brain—We use it to think.*